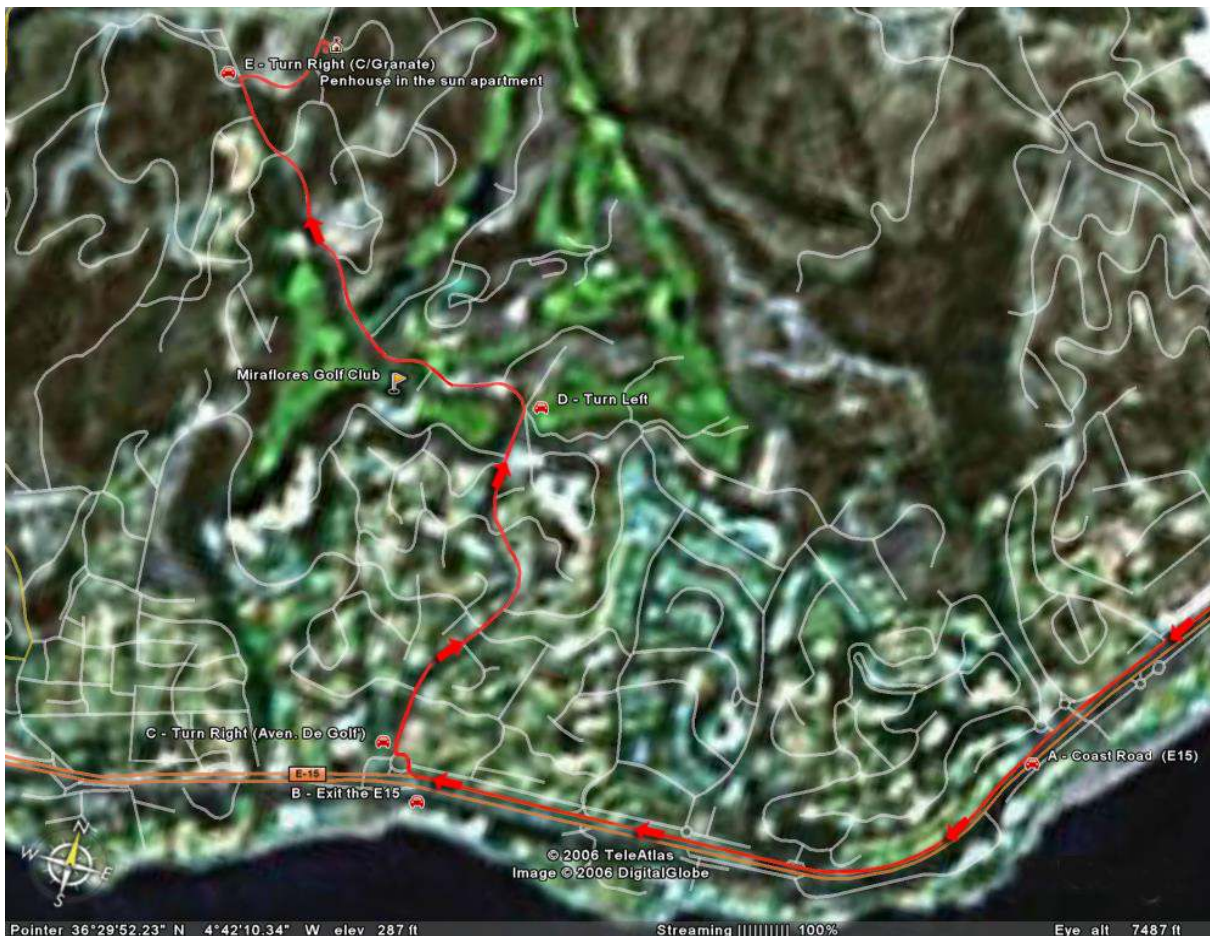


Miraflores (Directions to the apartment)

- **A** - Keep on this same 'coast road' for approx 10 minutes.
- You'll pass a white 'Cala de Mijas' sign (for info only) – this is just before our exit
- Go passed the first 'Riviera' sign that's to the right of the road
- **B** - Turn right and off the carriageway at the big white 'Riviera' sign that's over the road
- **C** - You'll go around the mini roundabout and take a right by the side of the Opencar Supermarket – Road is called 'Aven. De Golf'
- You'll go passed some bars and restaurants, including George's Bar
- Straight across a mini roundabout (don't forget to look left!) and proceed up the hill
- Up the hill and straight across a 2nd mini roundabout, palm trees are in the middle of the road
- Straight across a 3rd mini roundabout, palm trees still in the middle of the road
- **D** - The hill flattens out and the palm trees stop. Take a left here, there's an 'Oasis Club' sign
- The road dips, you'll pass the Miraflores Golf Course, then you'll pass the signpost for the Golf Clubhouse.
- **E** - From here it's the 3rd turn on your right, road is called C/Granate. The road bends around left (passed the side of the apartment block), then swings a sharp right around the back of the block and onto C/Onice. You will see a designated area for our rubbish, with a large beige 'wheelie' bin in it, then immediately on the right is the silver garage door that takes you underneath to the garage. NB – The road surface is still very bumpy on road C/Onice so drive slowly.



Apartment address:

Apartment Eden Golf Riviera, Block 3, Level 5, Number 4, C/Onice, Riviera del Sol, Mijas Costa 296

Simply press the remote garage door button as you drive up to it, and again press the button to close the door once you've driven through. Our car park space in number 27, which is a left turn as you enter the garage. The lights are on a timer, but can be turned on again by pressing the illuminated switches on the pillar supports. You will pass a single doorway as you turn left into the garage – this takes you to the lift. Again, timer switches are illuminated for you have light.

Return journey - Our Apartment to Malaga Airport:

Take the A7/E15 coast road back towards Malaga and the Airport is signposted from this road, as you near Malaga. Follow the Airport signs (they have a symbol of an aeroplane on too) and as you approach the airport, follow the signs for 'Rent a Car' (not departures), as it is here that you return your car. The 'Rent a car' signs are clear to follow, and they direct you to an outdoor car park.

Each hire car company has it's own area for leaving cars, easily shown on large signs above each space. Park your car in any free space and return your keys to the car rental hut that's on the car park. If it's out-of-hours and the hut is closed, there is an area on the hut to post keys through. If you need a trolley for your cases, head towards the airport building to find one.

Now enter the airport main building (the nearest sliding doors to the car park have 'Arrivals' written over it, but this does not matter). Once in the building, 'Departures' are signposted and point you to lifts that take you to the upper level. Once on this upper level, proceed to the relevant check-in desk as usual. Check-in staff will direct you from here.